

# WETLAND FLORA & FAUNA

DICRURUS  
MACROCERCUS-  
BLACK DRONGO



Generally found in open areas and savanna's. Diet is mainly insectivorous.

DELIAS EUCARIS -  
COMMON JEZEBEL



Commonly seen in gardens. The host plants are various species of small shrubs.

MAGPIE ROBIN



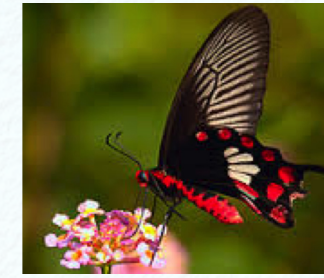
Common in wet open places, swamps, margins of pools and river banks.

WHITE-BREASTED  
KINGFISHER



Found in inundated paddy-fields, ponds, puddles, wells and on sandy seashores. Mainly feeds on large crustaceans, insects, earth-worms, rodents, snakes, fish and frogs.

PACHLIOPTA ARISTOLOCHAE-  
COMMON ROSE



Very common almost all over, abundant after rains. Visits flowers such as Lantana, Cosmos, Zinnia, Jatropha and Clerodendron.

HYPOLIMNAS MISIPPUS-  
DANAID EGGFLY



Danaid Eggflies prefer wetlands, woodlands and open areas.

CATOPSILIA POMONA-  
COMMON EMIGRANT



A very common and variable species of butterfly and a strong migrant.

VANELLUS INDICUS-  
RED-WATTLED LAPWING



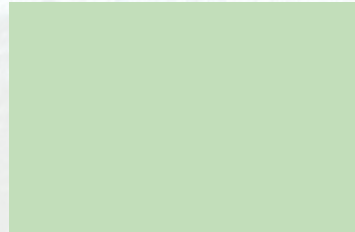
Prefers sites in close proximity to freshwater, such as wet grasslands, rivers, streams, creeks, marshes and pools. Diet includes a range of insects, snails and other invertebrates.

MOTACILLA CINEREA -  
GREYWAGTAIL



Found by streams, in forested areas and low-land watercourses. While feeding, it wags its long tail in a territorial display.

EGRETTA GARZETTA-  
LITTLE EGRET



Little egret is an aquatic bird, it feeds in shallow water and on land, consuming a variety of small creatures.

WHIRLIGIG BEETLE



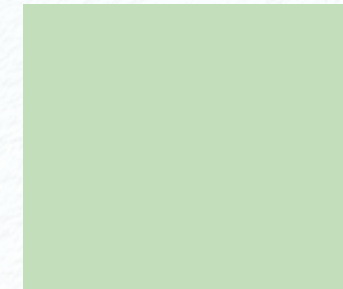
Water beetles usually swim on the surface, but go underwater when threatened. They get their name from their habit of swimming rapidly in circles when alarmed.

PRINIA SCIALIS-  
ASHY PRINIA



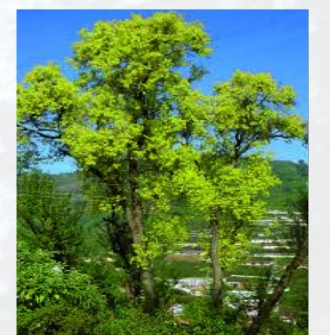
Found among tall grass and scrub, open secondary growth and reedbeds. Feeds on insects.

ARDEOLA GRAYII-  
INDIAN POND HERON



Found in a wide variety of habitats including rivers, lakes, marshes, mangroves, streams and paddy fields.

SALIX TETRASPERMA



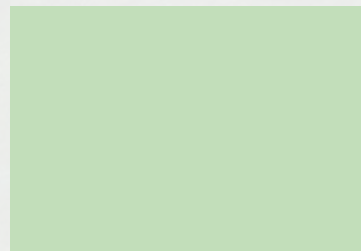
Indian willow. Found in swampy place and is an indicator of water. Prevents erosions.

JUNCUS GLAUCUS



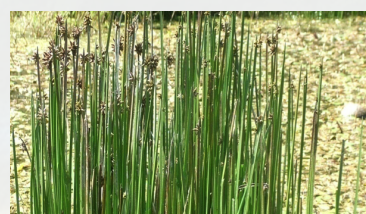
Common Rush and found in Marshy places. Stems erect and has spongy tissue.

CAREX BACCANS



Crimson seeded sedge. Grows in wet moist places and swamps. Has a triangular stem.

SCRIPUS MUCRONATUS



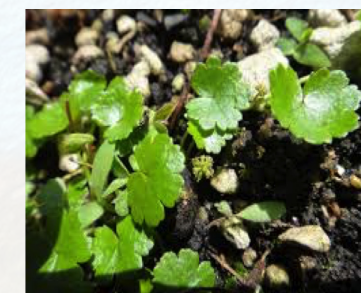
Water-sedge OBL. Workhouse of wetland water purifiers

UTRICULARIA COERULEA



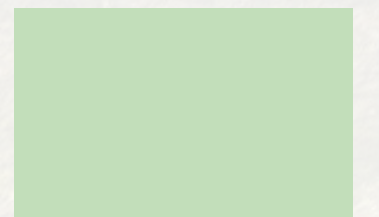
Carnivorous, perennial aquatic herb. Wetland species found on moist rock exposed to sun, muddy lake edges.

HYDROCOTYLE  
SIBTHORPIOIDES



Lawn penny. Found in damp, sunny or shady localities in river beds. Sometimes floating when flooded.

CROCOTHEMIS  
ERYTHRAEA-COMMON  
SCARLET-DARTER



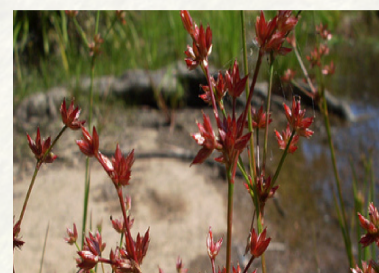
A wide range of both running and standing waters, except those that are shaded.

CYPERUS DIGITATUS



Flat finger sedge. Found in swamps or seasonally flooded areas, ditches and river banks. Wetland indicator. Leaves are used for making mats and for thatching.

JUNCUS PRISMATOCARPUS



Angled fruit rush grows in swamps and peat bogs as well as in wet grasslands and stream sides leaves are made up of several parallel tubes

RORIPPA INDICA



Watercress is a perennial herb, found growing in open running watercourses or near cool shallow springs and spring holes. Exceptionally rich in vitamins and minerals, and valued as a food and medicinal plant.

DROSERA BURMANNI



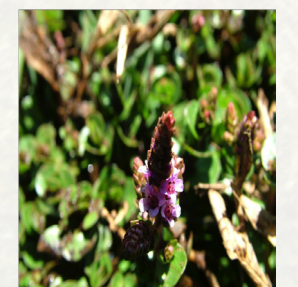
Grows low to the ground OBL. Absorbs ultraviolet light and is very attractive to insects.

PYCREUS  
SANGUIOLENTUS



Common in wet open places, swamps, margins of pools and river banks.

ROOTALA ROTUNDIFOLIA



Small herb growing by the waterside and occasionally in shallow water.

RUMEX NEPALENSIS



Perennial herb. Leaf bases grow in nitrogen-enriched and more productive habitats. Palatable to cattle.