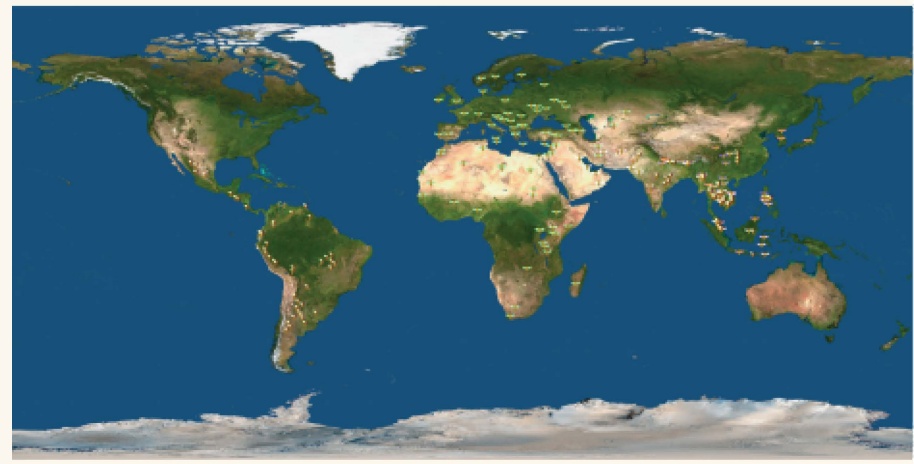


HONEYBEES OF THE WORLD



Honey bees are a group of insects in the family Apidae. They are social insects and live together in nests or hives. They make honey by collecting nectar from flowers extra floral nectarine.

There are almost **20,000** species of bees in the world.

In a colony, there are **3** types of adult honey bees: the queen, male drones, and infertile female workers.

Each colony has a single queen who can produce **2,000** eggs per day.

The average lifespan of queen bee is **2-3** years, worker bee is 6 weeks, drones live for 1-2 months. Drones die after mating with the queen.

Bees have **millions** of branched hair on its body called as scopa.



GIANT HONEYBEE *Apis dorsata*

Nesting : Builds open nests consisting of single comb that hang from tree branches, and sometimes from buildings.

Distribution : South and Southeast Asia.



KOSCHEVNIKOV'S HONEY BEE - *Apis koschevnikovi*

Nesting : Build multiple combs in tree cavities.

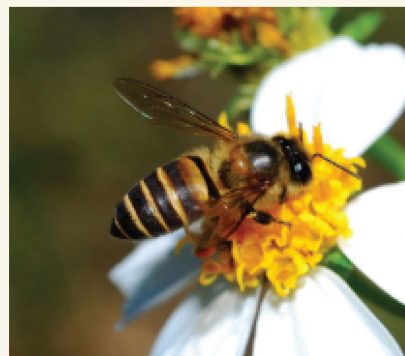
Distribution : Sabah State, Borneo, Malaysia. Indonesia. Its habitat is limited to the tropical evergreen forests of the Malay Peninsula, Borneo and Sumatra.



ASIAN HONEY BEE *Apis cerana*

Nesting : Builds nests consisting of multiple combs in tree cavities and man-made structures.

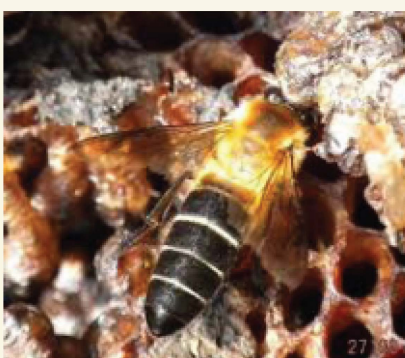
Distribution : Southern, southeastern, and eastern Asia.



PHILIPPINE HONEY BEE- *Apis nigrocincta*

Nesting : Build multiple combs in tree cavities.

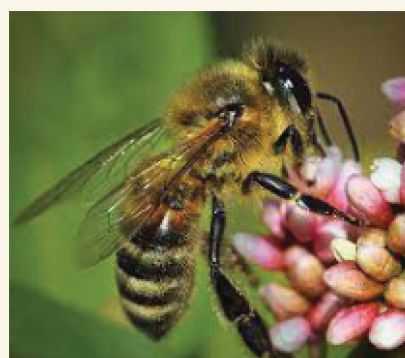
Distribution : Mindanao Island, Philippines and Sulawesi, Indonesia.



ROCK HONEY BEE *Apis laboriosa*

Nesting : Builds open nests of single comb on cliffs.

Distribution : Himalayan mountain range.



WESTERN HONEY BEE *Apis mellifera*

Nesting : Build multiple combs in tree cavities.

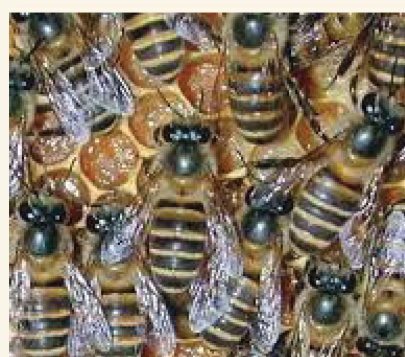
Distribution : Europe, the Middle East, and Africa.



RED DWARF HONEY BEE *Apis florea*

Nesting : Builds a single, exposed comb usually on tree branches or shrubs.

Distribution : Indian subcontinent throughout south-east Asia through to the Malaysian peninsular.



INDIAN BLACK BEE *Apis karinjodian*

Nesting : Build multiple combs in tree cavities.

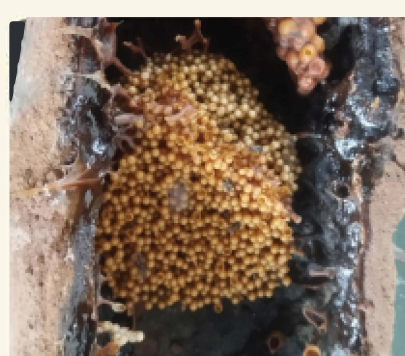
Distribution : Central Western Ghats and Nilgiris to the Southern Western Ghats, covering the states of Goa, Kerala, Karnataka and parts of Tamil Nadu.



BLACK DWARF HONEY BEE *Apis andreniformis*

Nesting : Build single comb hanging from small twigs in quiet forests.

Distribution : Tropical and subtropical regions of Southeast Asia.



STINGLESS BEES *Melipona sp*

Nesting : Nests are made from wax mixed with resin and gum and some species add mud.

Distribution : Tropical and subtropical regions of Southeast Asia.



Food and Agriculture Organization of the United Nations



© GROUP FOR ECO-DEVELOPMENT INITIATIVES