

Keystone Foundation



Namma Nilgiris
Water Conservation - 15 Nov'2017

Keystone Foundation



Keystone Foundation

- Working since 1995 in the Nilgiri Biosphere Reserve

Conservation
Ecology

Livelihoods
Economy

Enterprise
Equity

A photograph of a small, clear stream flowing through a dense forest. The water is white and frothy as it cascades over rocks, creating a small waterfall. The surrounding area is filled with vibrant green leaves and branches, some of which are in the foreground, partially obscuring the view of the water. A single, thin, light-colored branch lies across the middle of the stream, partially submerged. The overall scene is a serene and natural depiction of a forest environment.

Has Incubated

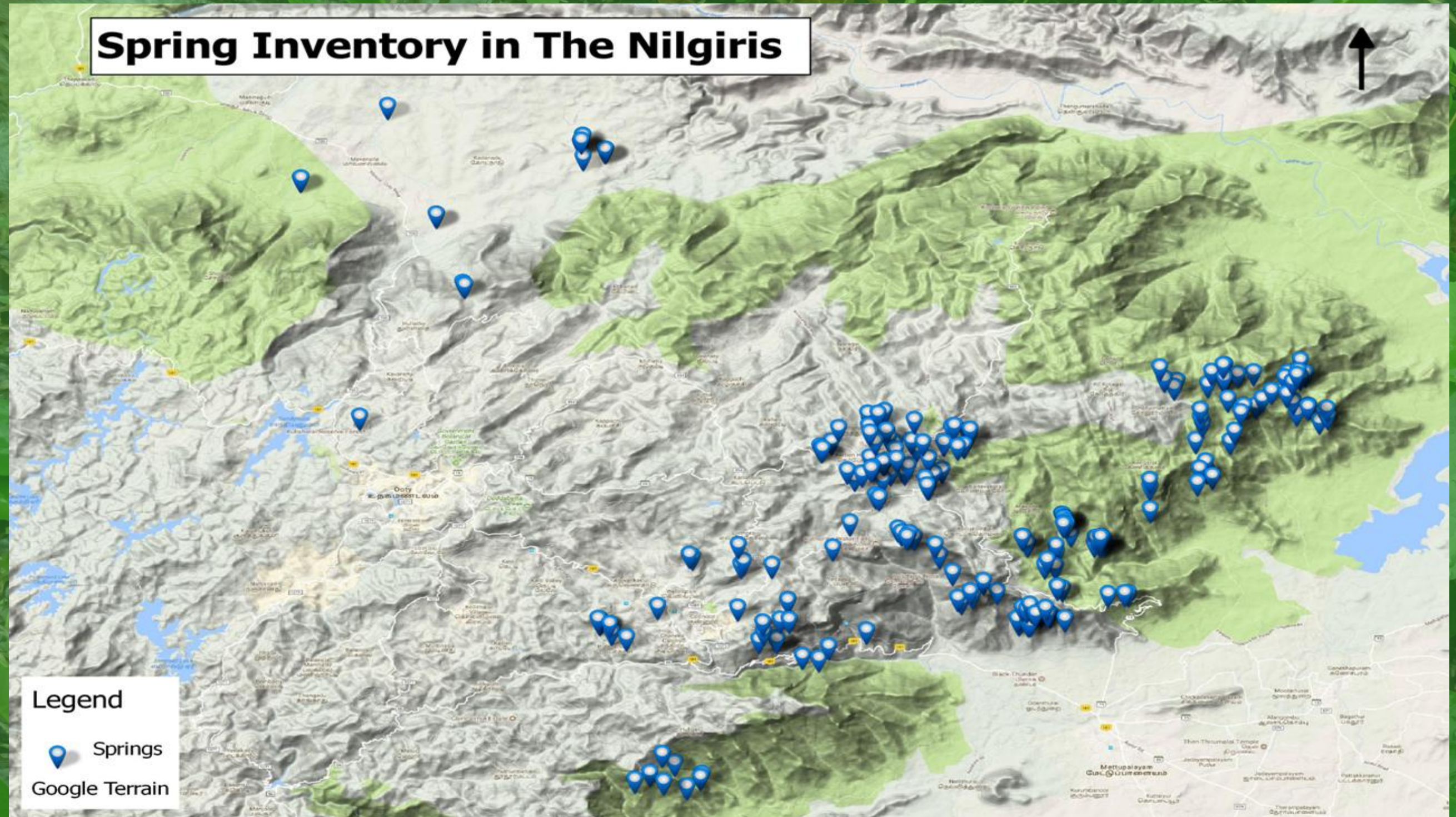
- Aadhimalai Pazhangudiyinar Producer Company,
- Last Forest Enterprises and
- Nilgiri Natural History Society.
- Radio Kotagiri 90.4 MHz, the first Community Radio in the Nilgiris

Key Water Sources



- Springs
- Wetlands (Swamps, Marshes etc.)
- Streams
- Keystone's work has focused on Springs and Wetlands - the neglected resources

Springs inventoried in the Nilgiris



Spring inventoried in the Coonoor Region

Inventory of springs in Coonoor area, The Nilgiris

Source of Data:

Spring locations: Field survey by Keystone Foundation with inputs from village communities

Note: This is an exhaustive mapping of all perennial springs in these areas. By inventorying springs in various pockets in the Nilgiris, we are able to arrive at an estimate of 75 springs in a 33 sq. km. area, yielding a spring density of 2.3 springs/sq. km. This is feeding into a national level spring density estimation exercise.

Legend

- Area surveyed
- Spring
- Town



Google Earth

Image © 2016 DigitalGlobe
Image © 2016 CNES / Airbus

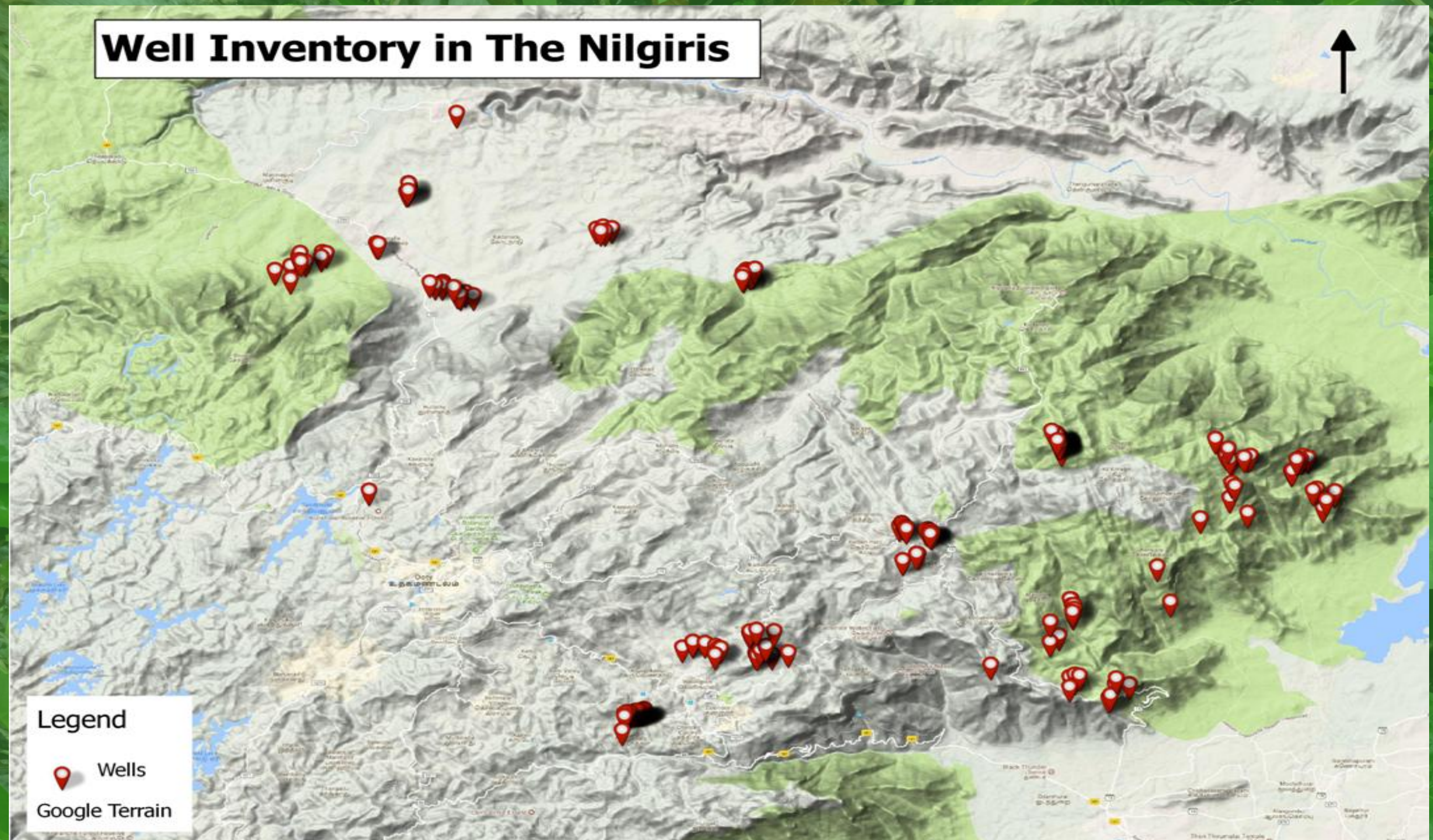
3 km

The image displays a topographic map of the Kotagiri region in Tamil Nadu, India. The map is overlaid with numerous blue location pins, indicating various points of interest. Key landmarks and locations labeled on the map include:

- Kotagiri Hill Palace
- Mahalingaswamy Temple
- Farview Mountain Resort Villas
- Longwood Shola Reserve Forest
- Green Nest Resort
- Hanging Huts Resort
- Kotagiri
- Kerada
- Ker
- Kallatti
- John Sullivan Memorial
- Nanthanadu
- Kotagiri Park
- Konavakoral
- Aracode
- Naduhatty
- cascade meadows Home Stay @oty
- Halakur Rg
- BXC Line
- 15
- 995

The map is framed by a decorative border featuring a waterfall on the left and lush green foliage on the right and bottom.

Wells inventoried in the Nilgiris



Geology of Guerency catchment



Index

	Charnockite
	Fractures
	Dip direction of foliation
	Vertical dipping foliation

Geology of Guerency catchment



1 km

Attadi

Google earth

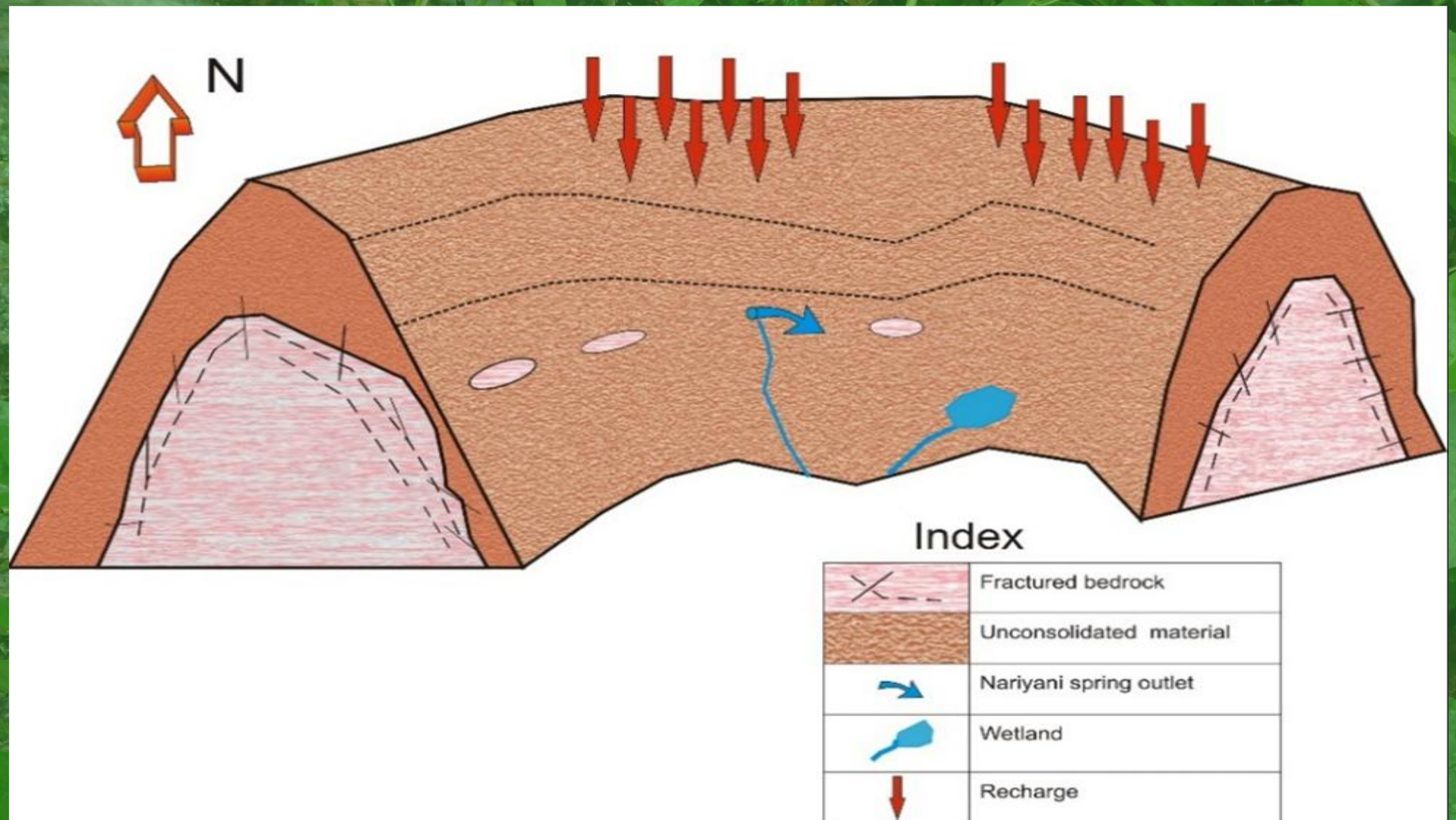
© 2015 Google

Image © 2015 CNES / Astrium

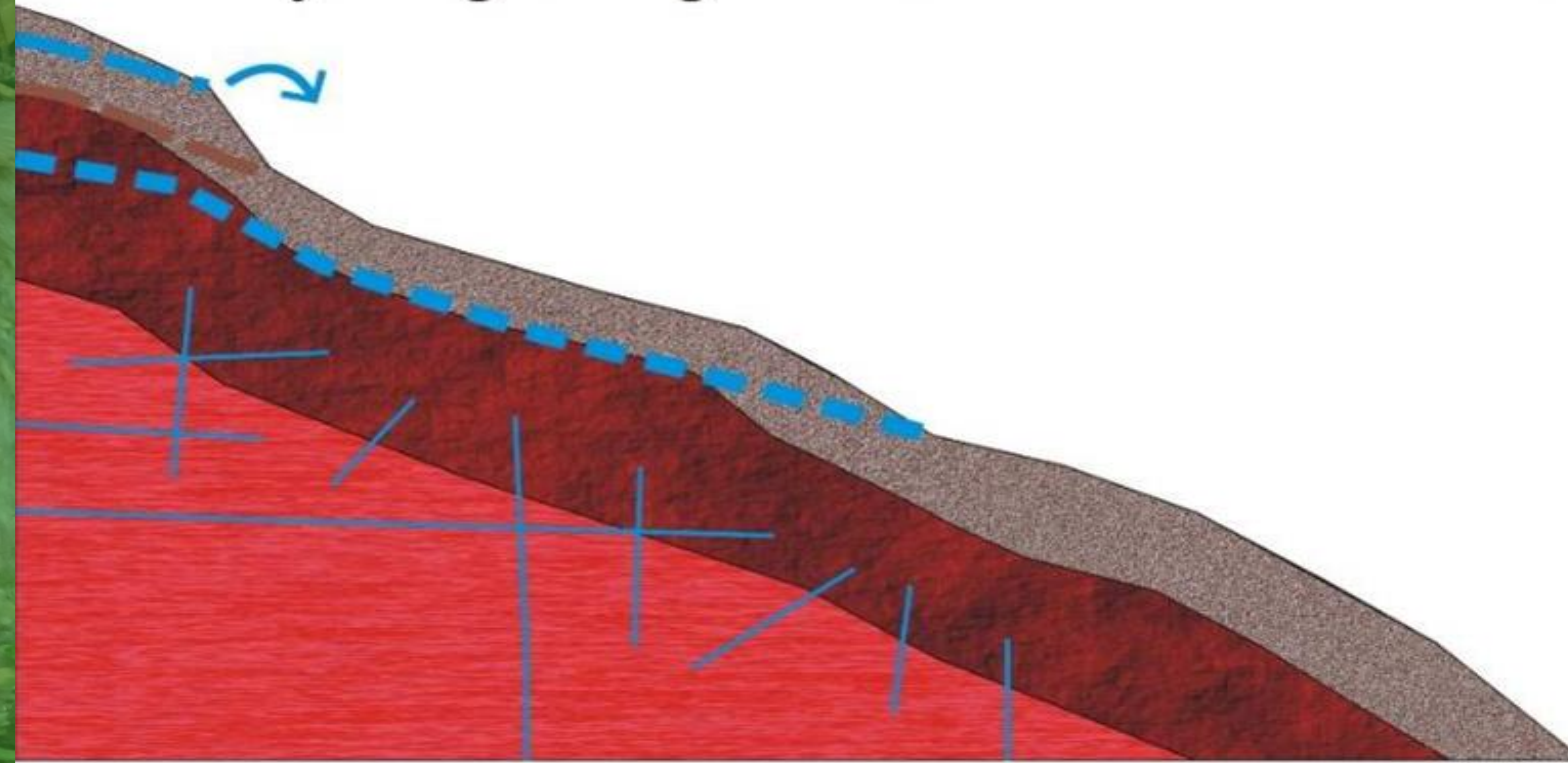
Yedappalli

Bandisolai






Conceptual hydrogeological set up of Nariyani Spring



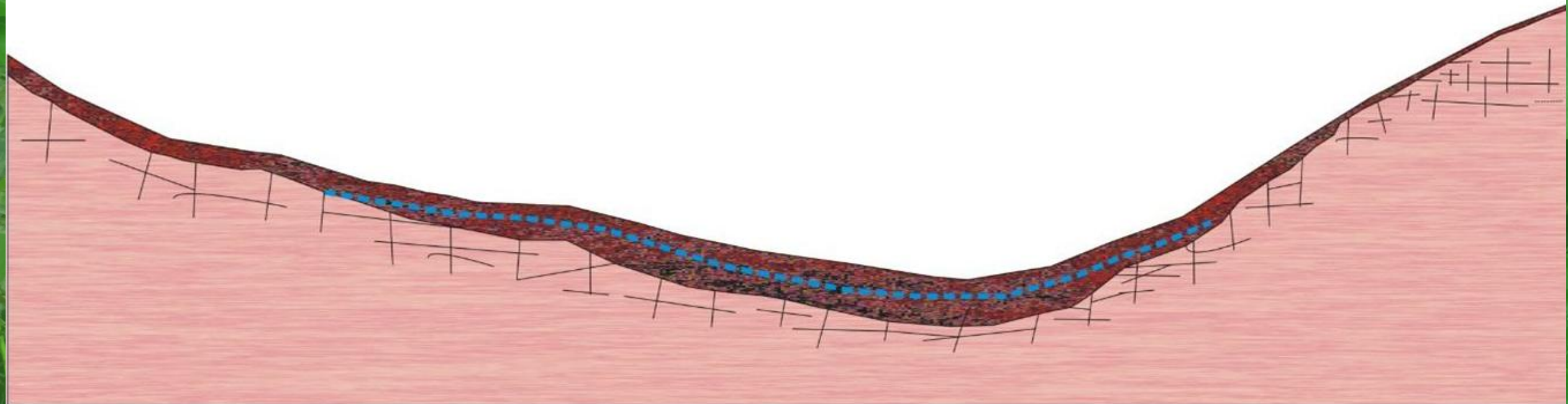
Hydrogeological cross section of unconfined aquifer

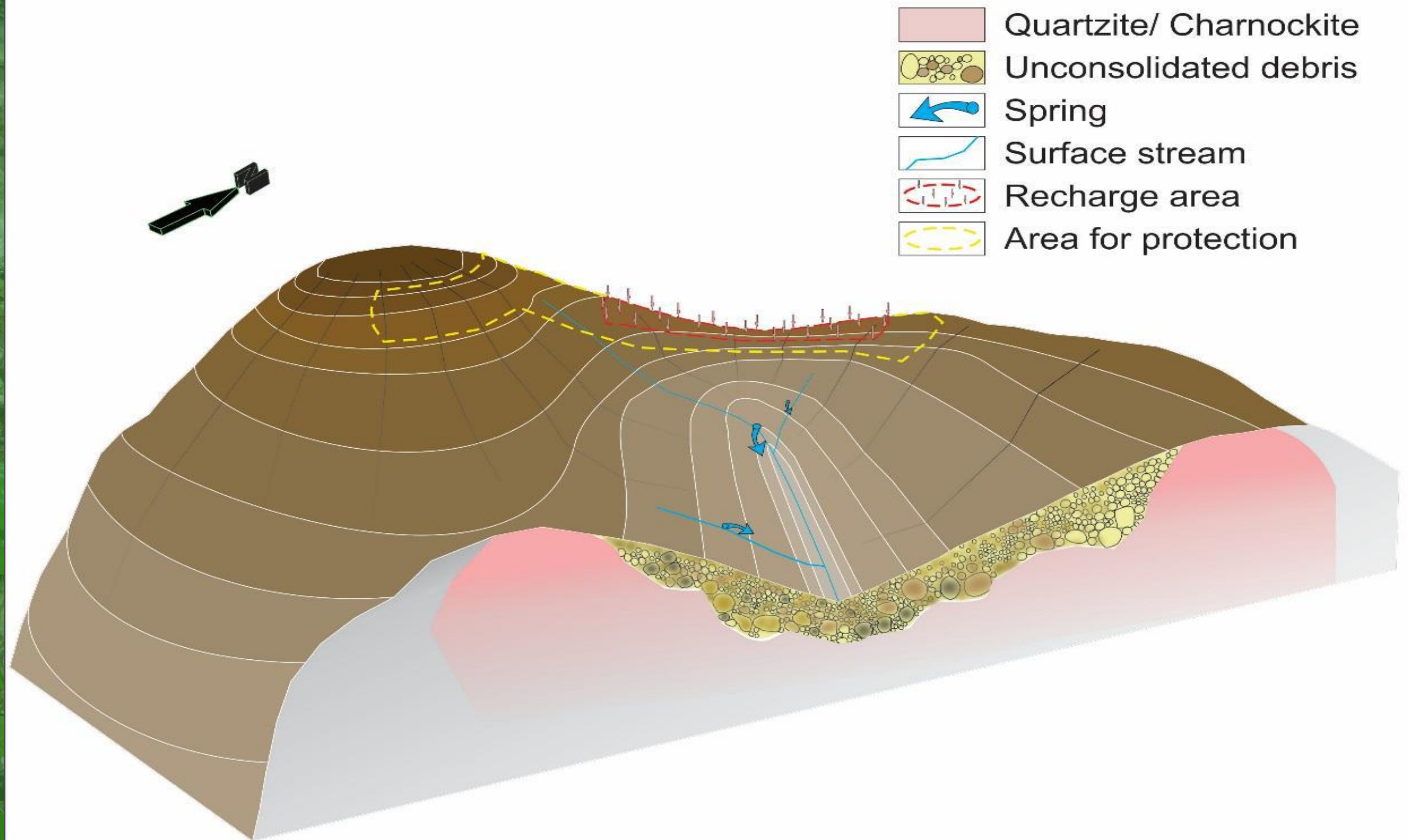


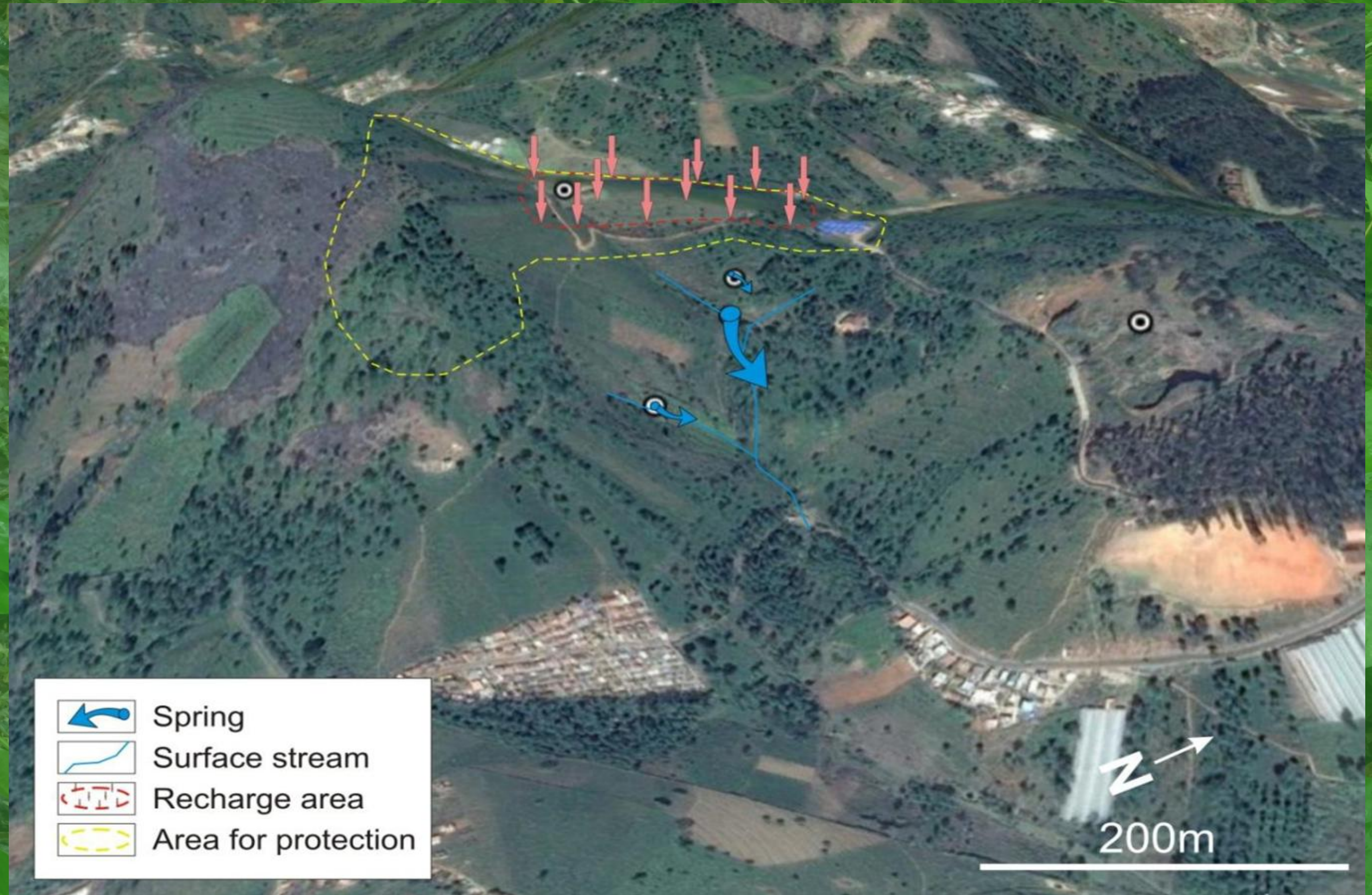
Index

	Soil and sediments
	Saprolite
	Fractured bedrock
	Water level
	clay layer acting as confining layer

Conceptual cross section along broad valleys







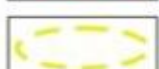
Spring



Surface stream



Recharge area



Area for protection

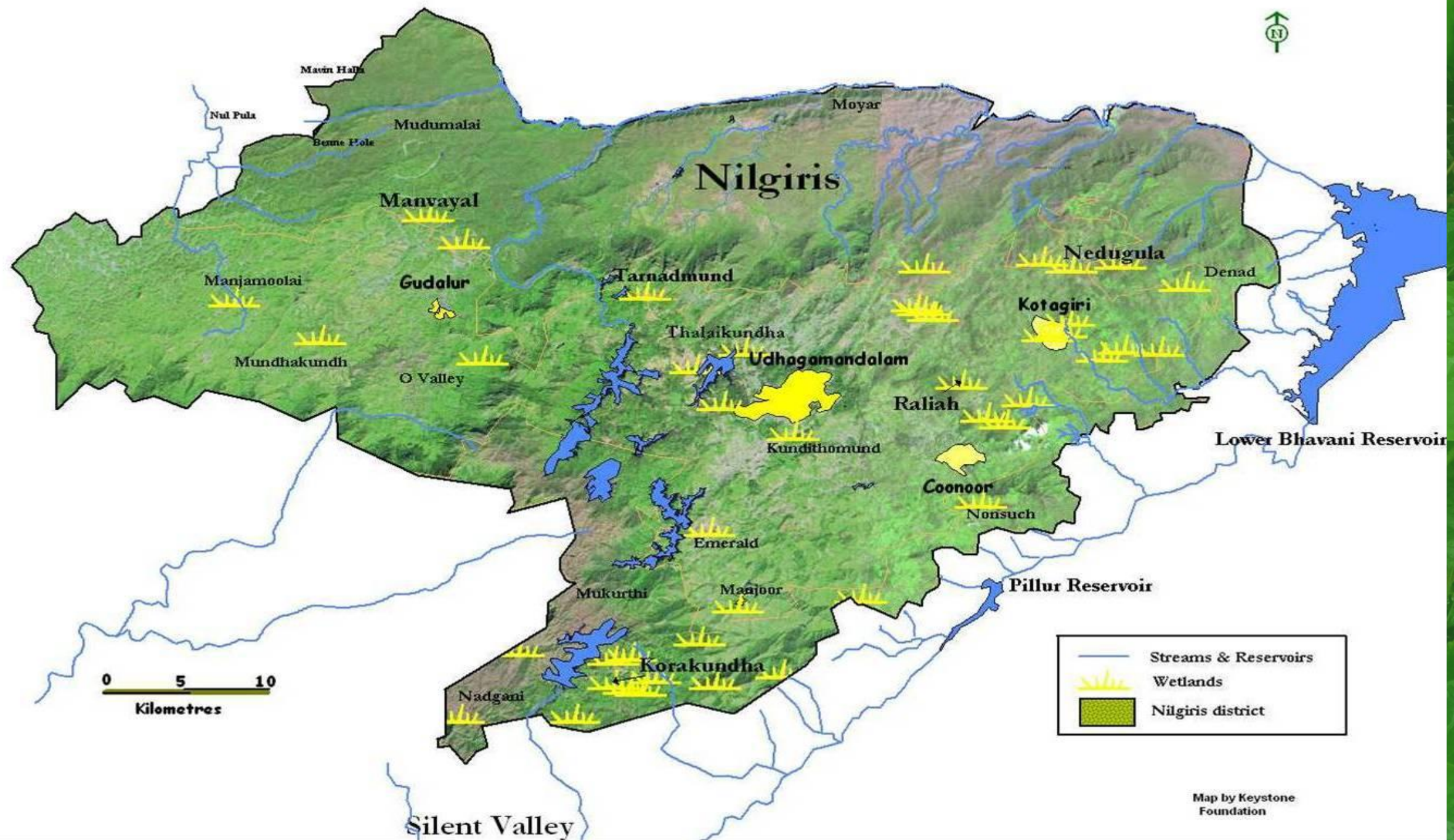
Interventions - Ecological Restoration



Interventions - Ecological Restoration



Wetlands in the Nilgiris

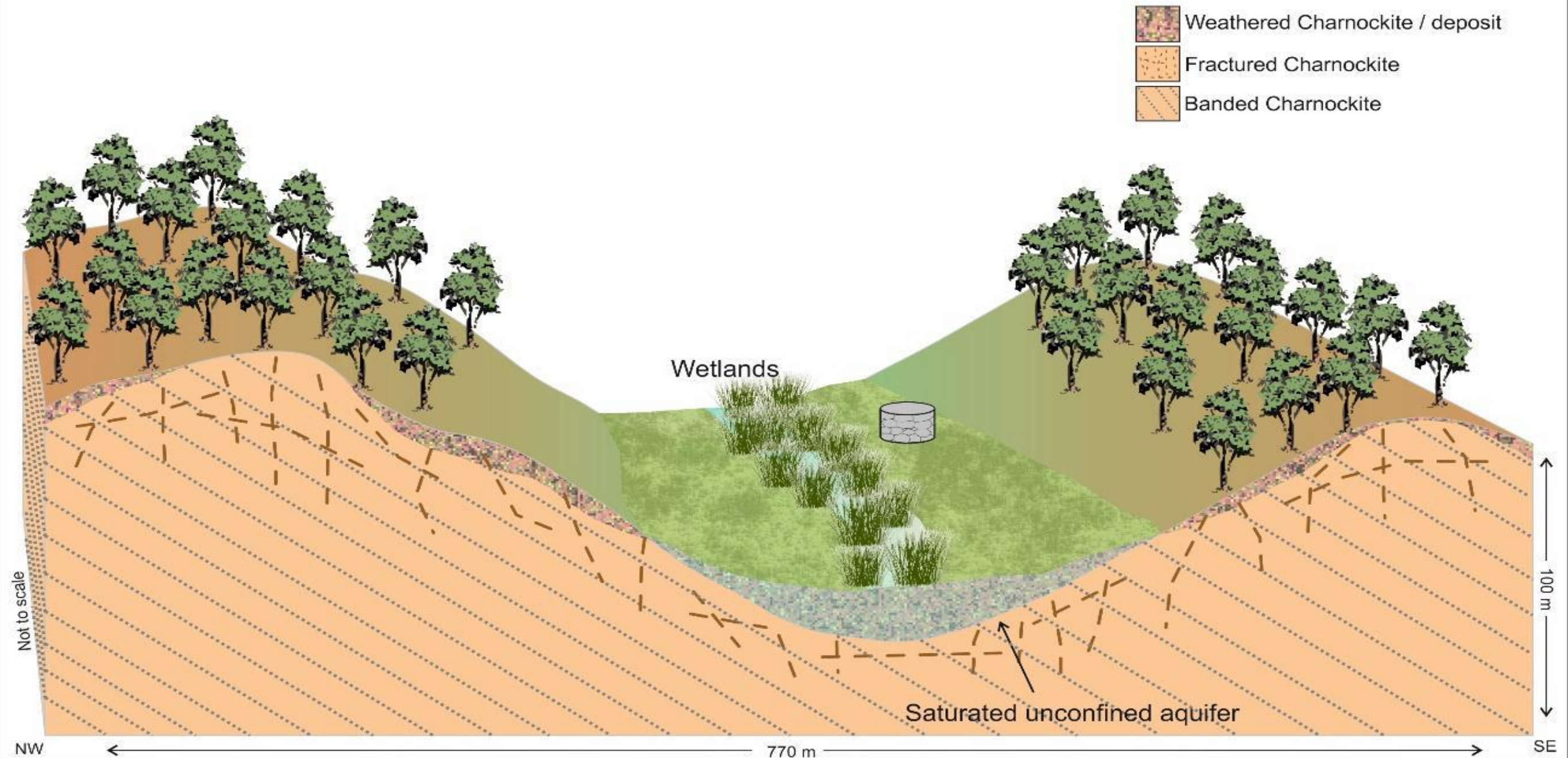


Threat - Exotics



Hydrogeological cross section- Thalakundah wetland

Conceptual layout of Thalaikunda wetland region



Yedapalli Wetland

2016

Wetland

Google earth

Image © 2016 CNES / Airbus
Image © 2016 DigitalGlobe



200 m

Source: Juxta

Eelada Wetland

Feb 2015

Kathukatty

Google Earth

Images © 2015 Google



JuxtaposeJS

A photograph of a small waterfall in a forest. Water is cascading over dark, wet rocks, creating white foam and spray. The surrounding area is filled with vibrant green foliage, including large leaves and thin branches. The scene is captured with a slight motion blur, giving it a sense of movement and freshness.

Open for Questions and Answers

Thank You